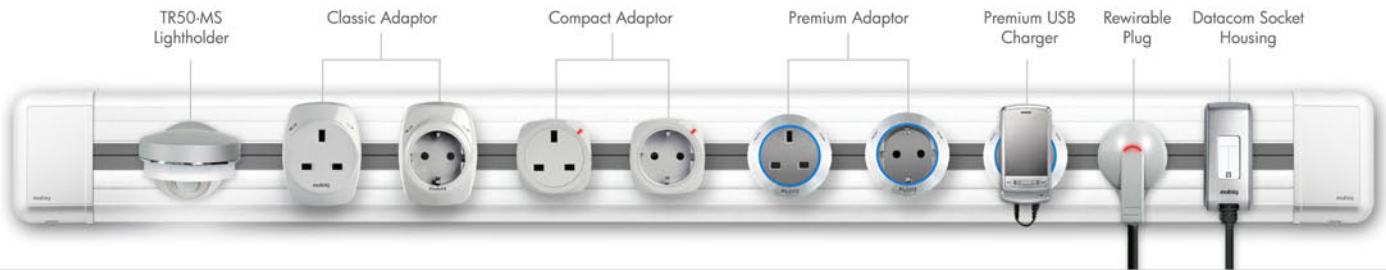


THE WORLD'S MOST FLEXIBLE POWER OUTLET SYSTEM



GSS SYSTEM

- ▶ Flexible
- ▶ Ultra Safe
- ▶ Sleek Design
- ▶ Multiple System
- ▶ Durable
- ▶ Architecturally Versatile
- ▶ Quick and Easy Installation
- ▶ Unique Modular Concept

Introducing the GSS System, the world's first of its kind electrical power outlet system that is **practical, safe and simply beautiful!** Our innovative and award winning track-based system allows you to add, remove and reposition power outlets anytime anywhere - by just a simple twist.

Our extensive range of architecturally versatile tracks are designed for use in a wide range of applications - residential use include kitchens, living rooms, study rooms, floor skirtings and many more; commercial use include system furnitures, server rooms, display counters, test laboratories and many more.

Free yourself from the limitations of conventional system and embrace the freedom of **GSS - because electrical power is now everywhere you want it to be.**

Fig.1 VSF1-MB Power and Data Track on office desk



Fig.2 SK Kitchen Track in the kitchen



Fig.3 SC Surface Compact Track in the workshop

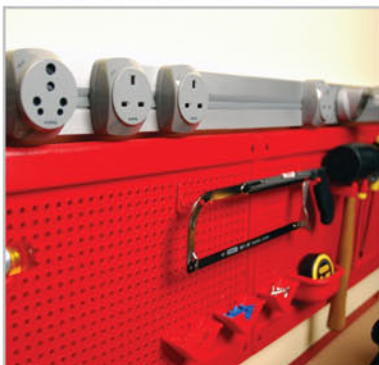
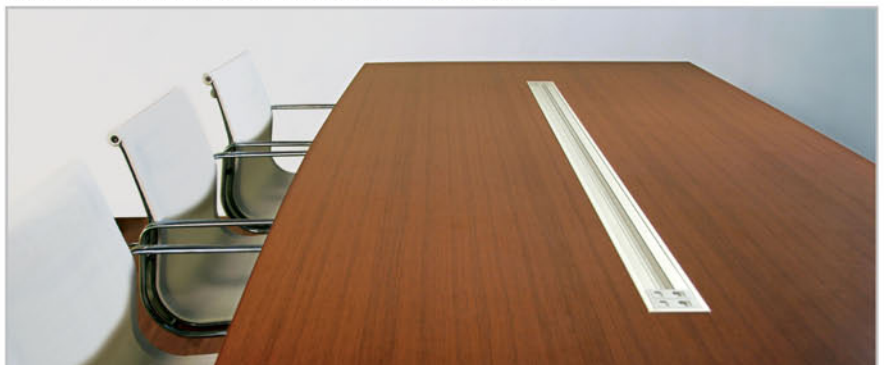


Fig.4 RH1 Recess Power and Cable Management Track in the conference table



HOW GSS SYSTEM WORKS

A **Power Track** is installed and supplied with electrical power (see Fig.5-6). Next, a selected Eubiq device (adaptor, plug ore accessory designed with a **Eubiq Key**) is then engaged on by a simple twist (see Fig.8).

The system is easy to install, easy to use and most importantly safe as all live parts are securely hidden.

GSS (Ground Sentry Shutter) is a patented safety feature found in all **Power Tracks** and **Wall Sockets**. With proper wiring, GSS effectively grounds all conductive objects in contact with it (see Fig.9). This ensures that the system is child-safe. It is virtually impossible for any hazardous 'shock'.

Fig.5 Installation method 1 - Converting from a conventional wall socket to Power Track

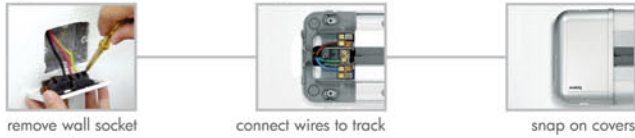


Fig.6 Installation method 2 - Converting a Power Track to wall socket using quick connectors



Fig.7 RC Recess Compact Track around kitchen island

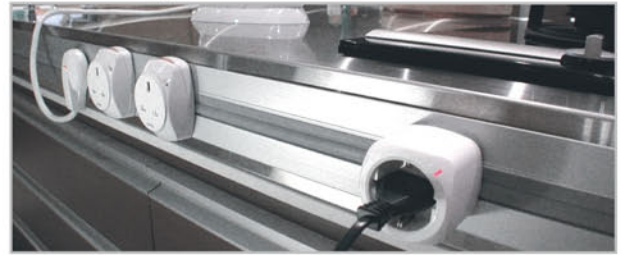


Fig.8 Simple steps to make a connection



Fig.9 GSS System



Each test laboratory or certification body may be testing/certifying only on selected range of products according to specific requirements.



EUBIQ POWER TRACKS

An extensive range of tracks are designed for use in recessed & surface mounted applications. Our unique modular design concept makes it possible to customise track lengths. Maximum length is 3.6 metres, however, tracks can be easily joined to any desired length (see Fig.11). A standard **Power Track** can accommodate up to 12 **Eubiq Adaptors** per metre length.

Surface mount tracks - a quick and immediate solution perfect for retrofit in existing homes, offices, workshops and more.

Recess mount tracks - a flushed solution ideal for integrating into furnitures, panels, skirting and more.

Customised Track - available upon request.

Fig.10 SD Surface Data Track in the kitchen



Fig.11 Interconnecting tracks

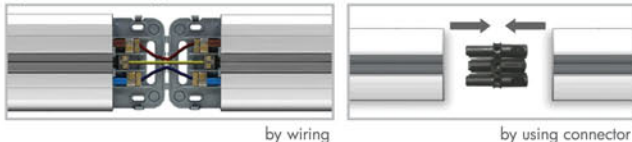
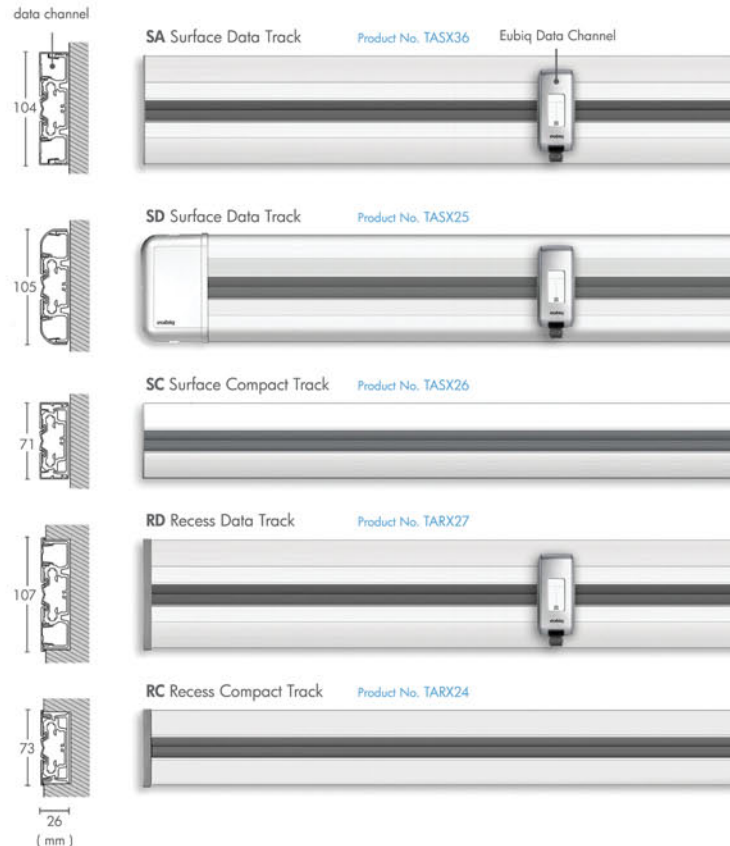


Fig.12 Power Track models

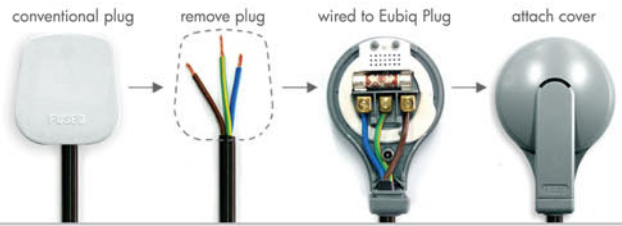


EUBIQ PLUG

The Eubiq Plug is specially designed for appliances to be re-wired (see Fig.13) so that a direct contact is made with the power track without the need for [Eubiq Adaptors](#).

Fig.13 Rewiring from a conventional plug to Eubiq Plug

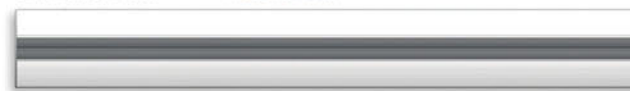
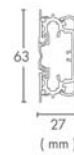
Product No.
PAUB16-GY(13A FUSED)
PAUE17-GY(16A NON-FUSED)



EUBIQ MODULAR TRACK

Designed with modularity in mind, the [SFC2 Modular Track](#) is the perfect solution for all power and data needs of a modern environment. One can choose from our range of housings that are specifically designed for easy installation in environments like living rooms, study rooms, offices, hotels, banks and retail premises.

SFC2 Modular Track Product No. TARX81



VSF1-MB Power and Data Track

APPLICATIONS :

- Wall Mount
- Underneath Cabinet
- Free Standing

VSF1-MC Power and Data Track

APPLICATIONS:

- Desk Clamp

DMS1 Power and Cable Management Track

APPLICATIONS :

- Wall Mount
- Wall Skirting

RH1 Recess Power and Cable Management Track

APPLICATIONS :

- Table Mount
- Furniture
- Partition
- Panels

RH2 Recess Power and Data Track

APPLICATIONS

- Table Mount
- Wall Mount
- Furniture
- Partition
- Panels

SH1 Power and Cable Management Track

APPLICATIONS

- Wall Mount

EUBIQ ADAPTORS

A complete range of Eubiq Adaptors are available for all major plug types. They are durable and tested to comply with international standards.

Adaptors are available for countries such as [United Kingdom](#), [United States](#), [Australia](#), [Japan](#), [Korea](#), [Germany](#), [Middle East](#), [China](#), [India](#), [Hong Kong](#), [Singapore](#), [Malaysia](#), [Indonesia](#), [Thailand](#), [South Africa](#) and many more.

Fig.14 RC Recess Compact Track on work desk



Fig.15 SA Surface Data Track with German Adaptors and Eubiq Plug



Fig.16 Premium Series



Fig.17 Classic Series



Fig.18 Compact Series



EUBIQ DATA SOCKET

Eubiq Data Sockets can be installed on any power track with data channels. Data cables are pre-run in the data channels and terminated into the data socket (see Fig.22). RJ-45 (networking), RJ-11 (telephone) and the F-type connector (CATV) are accepted and sold separately.

Fig.19 Eubiq Data Socket

Fig.20 Eubiq Data Socket exposed



Fig.21 SD Surface Data Track with Eubiq Data Sockets and Eubiq Plug



Fig.22 Installation of Eubiq Data Socket



EUBIQ ACCESSORIES

Our range of light fittings TR50-MS and TR50-TS are specially designed to receive the latest GX53 compact lamp (see Fig.24). TR50-MS is highly recommended for use in kitchens where the motion sensor auto-detects to switch on/off. TR50-TS is recommended for use in offices where a switch is required.

The premium USB Charger is designed to receive most USB enabled devices (mobile phone, mp3 player, digital camera, etc). It caters for applications up to 5V (see Fig.26).

Fig.23 TR50 models



Fig.24 Compact fluorescent lamp (9W)



Fig.25 TR50-MS in the kitchen



Fig.26 Premium USB Charger



TECHNICAL SPECIFICATIONS

	POWER TRACK	REWIRABLE PLUG	ADAPTOR							TR50-MS/TS	USB CHARGER		
											INPUT	OUTPUT	
RATED CURRENT	MAX 40A	13A(FUSED)/16A	13A	16A	6A/16A	16A	10A	16A	15A	2A	50mA	500mA	
RATED VOLTAGE	250V a.c.	250V a.c.	250V a.c.						125/250 V a.c.	125V a.c.	250V a.c.	100/250 V a.c.	DC5.0V



EUBIQ PRIVATE LIMITED. 9 JOO KOON CRESCENT SINGAPORE 629025
Tel: +65 6372 9393 Fax: +65 6372 9399 Email: info@eubiq.com

DISCLAIMER: EUBIQ PRIVATE LIMITED RESERVES THE RIGHT TO ALTER ANY DETAILS OF SPECIFICATIONS AND EQUIPMENT WITHOUT PRIOR NOTICE. DETAILS OF SPECIFICATIONS AND EQUIPMENT ARE ALSO SUBJECT TO CHANGES TO SUIT LOCAL STANDARDS, CONDITIONS AND REQUIREMENTS. PLEASE CONSULT YOUR LOCAL DEALER FOR MORE INFORMATION OR LOG ON TO EUBIQ WEBSITE.

www.eubiq.com